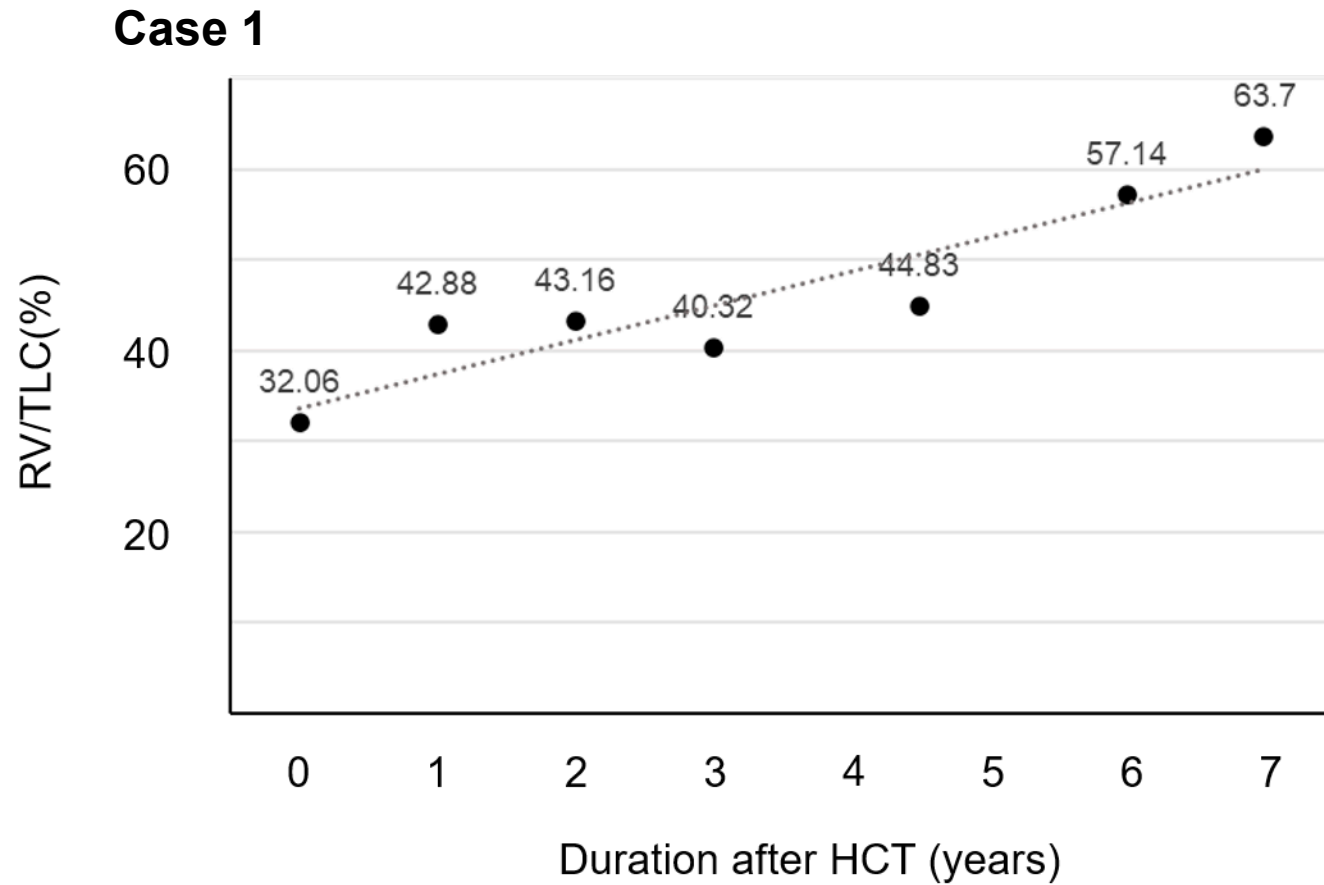
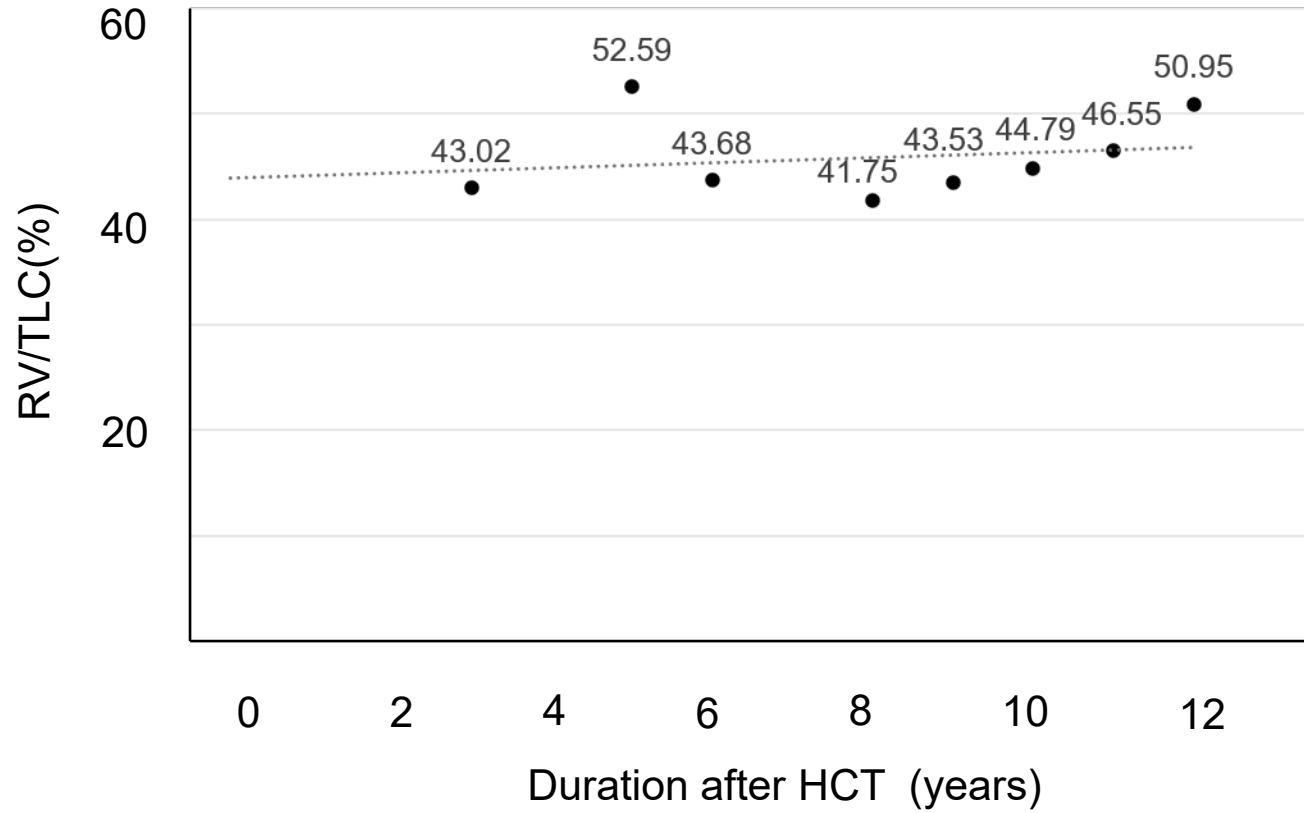


Supplementary figure

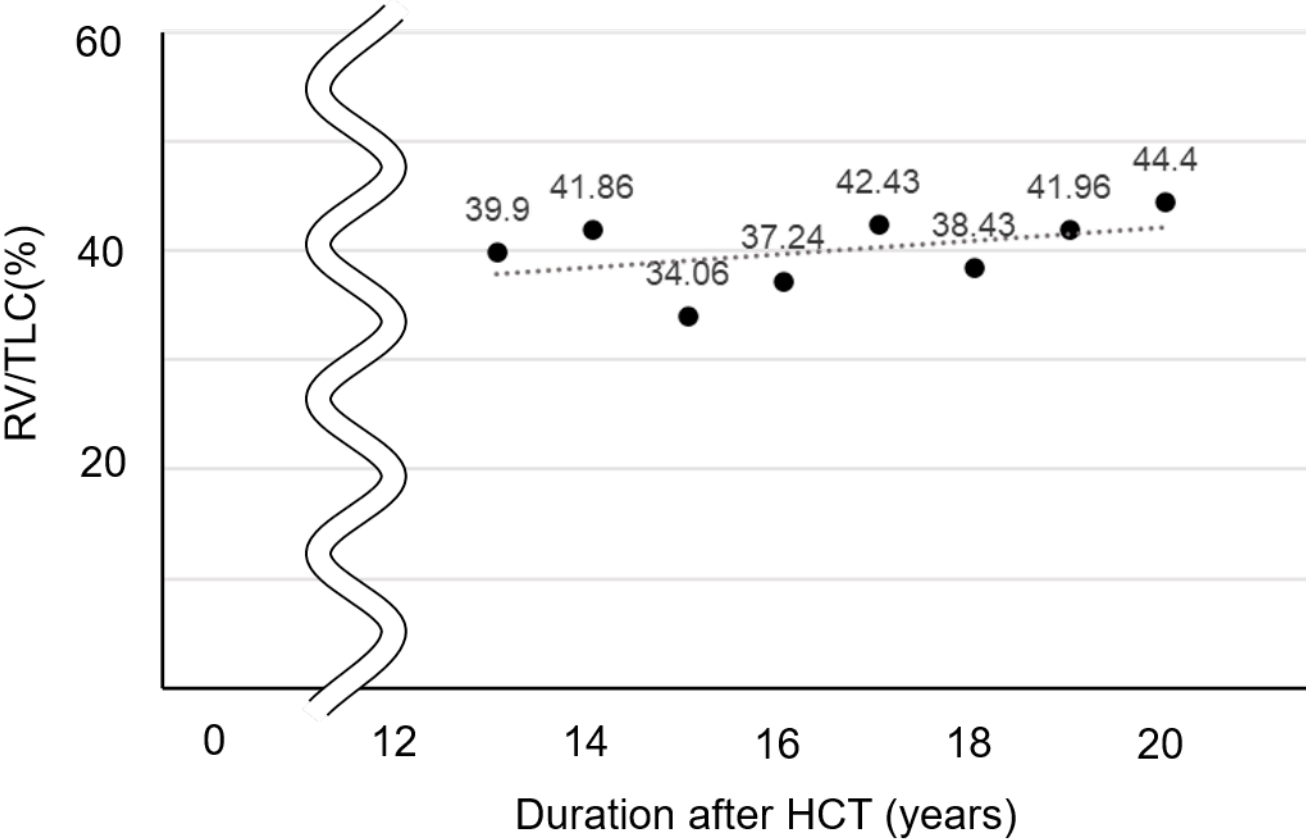
The graphs show the correlations between duration after HCT in years (X-axis) and RV/TLC ratio (Y-axis) for each case. Dashed lines indicate regression lines.



Case 2



Case 3



Supplementary table

Trend in the results of spirometry for three cases

	years after HCT	VC(L)	%VC	FVC(L)	%FVC	FEV1(L)	%FEV1	FEV1%	FRC(L)	%FRC	RV(L)	%RV	TLC(L)	%TLC	RV/TLC(%DLCO	%DLCO		
Case 1	0	3.37	86.2	3.38	86.4	2.69	77.5	79.6	2.91	72.6	1.59	101.9	4.96	85.5	32.06	9.35	44	
	1	3.09	79.4	3.26	83.8	3.26	95	100	3.74	88	2.35	148.7	5.48	94.6	42.88	12.14	61.6	
	2	3.2	82.3	3.31	85.1	3.27	95.3	98.8	3.84	86.7	2.43	150.9	5.63	96.9	43.16	10.87	57.4	
	3	2.89	75.1	3.03	78.7	2.97	88.1	98	3.39	79.2	2	125	4.96	86.1	40.32	11.68	60.7	
	5	2.08	54	2.07	53.8	2.05	60.8	99	2.59	59.5	1.69	103.7	3.77	65.1	44.83	10.46	54.7	
	6	1.32	35	1.33	35.3	1.28	39.5	96.2	2.25	48.8	1.76	108.6	3.08	54	57.14			
	7	0.98	26.1	1	26.7	0.98	30.6	98	2.03	43.2	1.72	105.5	2.7	47.5	63.7			
Case 2	0	3	111.5	2.97	110.4	2.36	96.3	79.5										
	1	2.76	103.4	2.83	106	2.29	95	80.9										
	3	2.49	94.3	2.43	92	2.17	91.9	89.3	3	158.7	1.88	158	4.37	112.3	43.02	9.81	59.2	
	5	1.83	70.1	1.94	74.3	1.71	74.3	88.1	2.8	145.8	2.03	167.8	3.86	99.7	52.59	7.35	51.8	
	6	1.96	75.4	1.97	75.8	1.57	68.9	79.7	2.39	132.8	1.52	125.6	3.48	90.2	43.68	8.99	53.6	
	8	1.8	70	1.81	70.4	1.6	72.1	88.4	1.95	93.8	1.29	104.9	3.09	80.5	41.75	7.62	52.6	
	9	1.57	61.6	1.63	63.9	1.54	70	94.5	1.94	107.8	1.21	97.6	2.78	72.6	43.53	6.91	42	
	10	1.59	62.6	1.53	60.2	1.31	60.4	85.6	1.99	110.6	1.29	103.2	2.88	75.4	44.79			
	11	1.47	58.3	1.54	61.1	1.43	66.8	92.9	1.84	101.7	1.28	101.6	2.75	72	46.55			
	12	1.22	49	1.27	51	1.1	52.6	86.6	1.77	96.7	1.34	105.5	2.63	69	50.95			
	Case 3	0	4.5	100.45	4.63	103.35	4.43	100	95.68									
		13	3.45	81.6	3.56	84.2	3.37	84.3	94.7	3.98	103.4	2.29	159	5.74	95.5	39.9	15.98	63.7
14		3.25	76.8	3.24	76.6	3.24	81	100	3.86	100.3	2.34	159.2	5.59	92.7	41.86	14.99	59.1	
15		3.35	79.8	3.45	82.1	3.35	84.8	97.1	0	86.8	1.73	117.7	5.08	84.5	34.06	15.12	59.9	
16		3.32	79.2	3.38	80.7	3.26	83	96.4	3.35	88.2	1.97	131.3	5.29	88	37.24	15.32	60.6	
17		3.08	74.4	2.84	68.6	2.77	71.8	97.5	3.54	90.8	2.27	153.4	5.35	89.8	42.43	15.04	62.4	
18		3.02	73.1	2.96	71.7	2.92	76.2	98.6	3.08	81.7	1.91	127.3	4.97	83.5	38.43	13.66	55.4	
19		2.88	70.1	2.86	69.6	2.84	74.9	99.3	3.44	90.8	2.14	141.7	5.1	85.9	41.96			
20		2.85	69.7	2.87	70.2	2.83	75.3	98.6	3.45	90.3	2.3	151.3	5.18	87.4	44.4	18.07	75.1	

Blank columns in the table indicate uninspected.

HCT, hematopoietic cell transplantaiton; VC, vital capacity; FVC, forced vital capacity; FEV1, forced expiratory volume in one second; FRC, functional residual capacity; RV, residual volume; TLC, total lung capacity; DLCO, diffusing capacity for carbon monoxide